

## Plot 13 4 Sandstone Close Stapleford, Nottingham NG9 8AP



On the instructions of Futures Housing Group, we are pleased to offer for sale this brand new three bedroom semi detached house offered for sale on a Shared Ownership Scheme. The Shared Ownership Scheme is there to help many individuals and families purchasing an affordable home buying a share of between 50%-75% of the property and paying rent on the remainder.

This brand new energy efficient home offers features including a fully fitted kitchen with built-appliances, useful utility room and cloaks/WC. The property is gas centrally heated and will be finished in a ready to move into condition with the inclusion of carpets and floor coverings throughout.

The property will benefit from off-street parking and a landscaped rear garden.

This property is one of five offered for sale on a shared ownership basis within a development of fifteen houses built on what was formerly known as Malts Yard which is conveniently situated on the edge of Stapleford town centre. With useful facilities on the doorstep, including a regular bus service linking Nottingham and Derby, Aldi supermarket and various shops and facilities within the town centre itself. The area is also great for local and regional employment with Nottingham University and Queens Medical Centre in easy reach.

Stapleford has a number of well regarded schools for all ages, a generous amount of open space and playing fields. The A52 for Nottingham/Derby, Junction 25 of the M1 motorway and the Nottingham Park and Ride are within easy reach.

With anticipated completion date of mid September, for further information and to register your interest, please contact the Stapleford Branch of Robert Ellis on 0115 949 0044.

**50% Shared Ownership £125,000 Leasehold**

# Plot 13 4 Sandstone Close Stapleford, Nottingham NG9 8AP

## ENTRANCE HALL

Stairs to the first floor and door to living room.

LIVING ROOM 15'3" x 12'3" (at widest point) (4.65 x 3.75 (at widest point))  
Double glazed window to the front and door to kitchen diner.

KITCHEN DINER 14'6" x 11'8" (4.43 x 3.58)

Incorporating a brand new fitted range of wall, base and drawer units with work surfacing and inset one and a half bowl sink unit with single drainer. Built-in oven and hob with extractor hood over. Space for freestanding fridge/freezer. Double glazed window and door to rear garden and door to utility room.

## UTILITY ROOM

With plumbing and space for washing machine, wall mounted gas boiler (for central heating and hot water), door to cloaks/WC.

## CLOAKS/WC

Incorporating a two piece suite comprising wash hand basin and low flush WC. Double glazed window.

## FIRST FLOOR LANDING

Giving access to bedrooms and bathroom.

BEDROOM ONE 9'8" increasing to 15'7" x 10'0" (2.95 increasing to 4.77 x 3.07)  
Double glazed window to the front.

BEDROOM TWO 12'7" x 8'5" (3.84 x 2.57)

Double glazed window to the rear.

BEDROOM THREE 8'5" x 6'11" (2.58 x 2.11)

Double glazed window to the rear.

## BATHROOM

Incorporating a three piece suite comprising wash hand basin, low flush WC and bath with shower over. Double glazed window.

## OUTSIDE

The property will have an open plan frontage with off-street parking and the rear garden will be landscaped with patio and lawn.

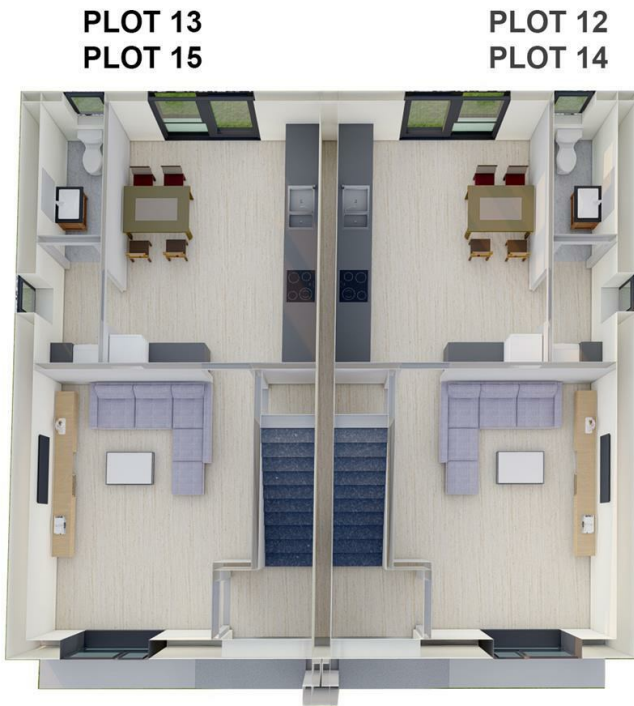
## AGENT'S NOTES

The measurements have been taken from architect's drawings.

Shared Ownership : Shares are available from 50%-75%. The rent on the unsold equity will be charged at 3% of the unsold equity. Further information is available on request.

The 100% price of this property is £250,000

Service Charges : £431.52 PA



GROUND FLOOR PLAN



FIRST FLOOR PLAN

These details are for guidance only and complete accuracy cannot be guaranteed. If there is any point, which is of particular importance, verification should be obtained. All measurements are approximate. No guarantee can be given with regard to planning permissions or fitness for purpose. No apparatus, equipment, fixture or fitting has been tested.